

GUIDELINES FOR AUTHORS PREPARING MANUSCRIPTS FOR ISPRS SPEC3D WORKSHOP, OCTOBER 25-27, 2017, JYVASKYLA

M. O. Altan^a, G. Toz^a, I. Dowman^b, S. Kulur^a, D. Z. Seker^a, C. Heipke^{c,*}

^a ITU, Civil Engineering Faculty, 80626 Maslak Istanbul, Turkey - (oaltan, tozg, kulur, seker)@itu.edu.tr

^b Dept. of Geomatic Engineering, University College London, Gower Street, London, WC1E 6BT UK - idowman@ge.ucl.ac.uk

^c Institute of Photogrammetry and GeoInformation, Leibniz Universität Hannover, Germany - heipke@ipi.uni-hannover.de

Commission III, WG III/4

KEY WORDS: Manuscripts, Proceedings, ISPRS Archives, ISPRS Annals, Guidelines for Authors, Styleguide

1. INTRODUCTION

1.1 General Instructions

The maximum extended abstract length is restricted to **2 pages** and contain at least Introduction, Methodology, Results and Validation. The font type Times New Roman with a size of nine (9) points is to be used. Abstract with less than 500 words won't be considered for review.

1.2 References

...All images are then relatively oriented through a hierarchical structure from motion scheme (Pollefeys et al., 2004),(Hartley and Zisserman, 2004),(Snavely et al., 2008). More in (Jancosek and Pajdla, 2011).

3. RESULTS AND VALIDATION

Type text single-spaced, with one blank line between paragraphs and following headings Figure 1.

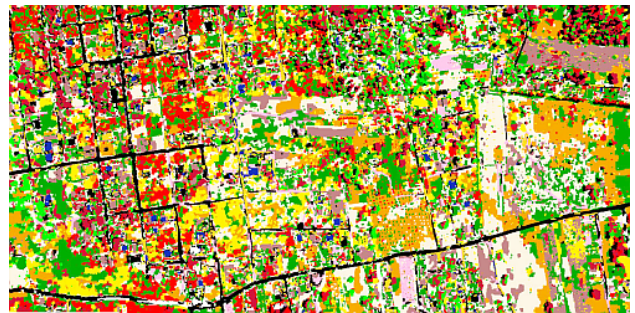


Figure 1. Experimental results

2. METHODOLOGY

Type text single-spaced, with one blank line between paragraphs and following headings. Start paragraphs flush with left margin.

2.1 Captions

All captions should be typed in upper and lower case letters, centered directly beneath the illustration. Use single spacing if they use more than one line. All captions are to be numbered consecutively, e.g. Figure 1, Table 2, Figure 3.

2.2 Equations

Equations should be numbered consecutively throughout the paper. The equation number is enclosed in parentheses and placed flush right. Leave one blank lines before and after equations:

4. ACKNOWLEDGEMENT

This research has been co-financed by ..

*Corresponding author

REFERENCES

Hartley, R. I. and Zisserman, A., 2004. *Multiple View Geometry in Computer Vision*. Second edn, Cambridge University Press, ISBN: 0521540518.

Jancosek, M. and Pajdla, T., 2011. Multi-view reconstruction preserving weakly-supported surfaces. In: *Computer Vision and Pattern Recognition (CVPR), 2011 IEEE Conference on*, pp. 3121–3128.

Pollefeys, M., Van Gool, L., Vergauwen, M., Verbiest, F., Cornelis, K., Tops, J. and Koch, R., 2004. Generation of orthoimages and perspective views with automatic visibility checking and texture blending. *International Journal of Computer Vision* 3(3), pp. 207–232.

Snavely, N., Seitz, S. and Szeliski, R., 2008. Modeling the world from internet photo collections. *International Journal of Computer Vision* 80(2), pp. 189–210.